

echo® H₂ machine

The Premier H₂ Enriched Water Purification System



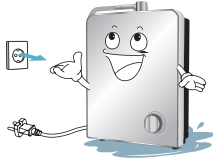
Warning: Incorrect installation and/or operation could void your valuable warranty.
Please protect your investment! READ THIS MANUAL CAREFULLY



Safety precautions

If the Echo[®] H₂ Machine is immersed in water by accident, remove the plug from the socket and remove the Machine from water.
Contact the Customer Support.

- ▶ It may cause electric shock.



Always set the voltage of the Echo[®] H₂ Machine to match the voltage of the power supply.
Any power other than the proper voltage **MUST NOT** be used.

- ▶ Do not use the Echo[®] H₂ Machine with other electric devices at the same time as it may cause fire.



Do not pull on the power cord.
Do not touch the plug with wet hand.

- ▶ It may cause electric shock.
- ▶ Remove excess dust from the plug on a regular basis using a dry cloth. Failure to do so may cause fire



Insert the plug completely into the power supply.

- ▶ Loose connection may cause electric shock or heat generation leading to fire.
- ▶ Do not use a defective plug or loose socket.
- ▶ Do not bend the power cord by force.
- ▶ Do not damage or deform the cord by placing a heavy object over it. (It may cause fire or electric shock.)
- ▶ Wipe off dust or water from the plug pins and the connection parts. (It may cause fire or electric shock.)

Do not install the Echo[®] H₂ Machine in an area exposed to extreme temperatures.

- ▶ Ambient temperature : 5~104 F,
Water temperature: 41~86 F
- ▶ Never install the Echo[®] H₂ Machine in a location where it may be subject to freezing temperatures.



Keep away from excessive humidity or dust, water splashes or direct sunlight.

- ▶ It may cause fire or electric shock.



Connect the Echo[®]H₂ Machine to the cold water source line.

- ▶ Connection to the hot water source line may damage the filter and /or machine.



Do not splash water on the Echo[®]H₂ Machine or wash the Machine with water.

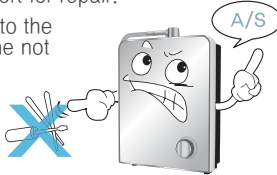
- ▶ It may cause short, electric shock or breakdown.



Do not un-assemble, repair or alter the Echo[®]H₂ Machine.

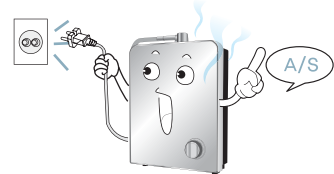
- ▶ It may cause fire or electric shock. Please contact the retailer or the Customer Support for repair.

Any alterations to the Echo[®]H₂ Machine not done by the corporate office will VOID YOUR WARRANTY.



Remove the plug from the socket immediately if there is abnormal noise or smell from the Echo[®]H₂ Machine, and contact the Customer Support.

- ▶ It may cause fire or electric shock.



Do not block the Water Output. Do not bend, twist or press the hose.

- ▶ It may cause water leak, incorrect pH level in water or Echo[®]H₂ Machine malfunction.



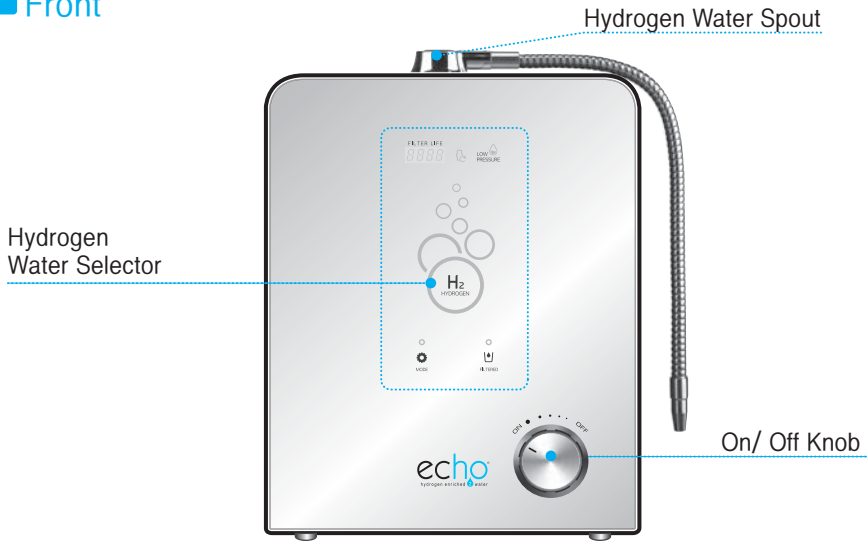
Do not use the Echo[®]H₂ Machine with any water source that is not already drinkable.



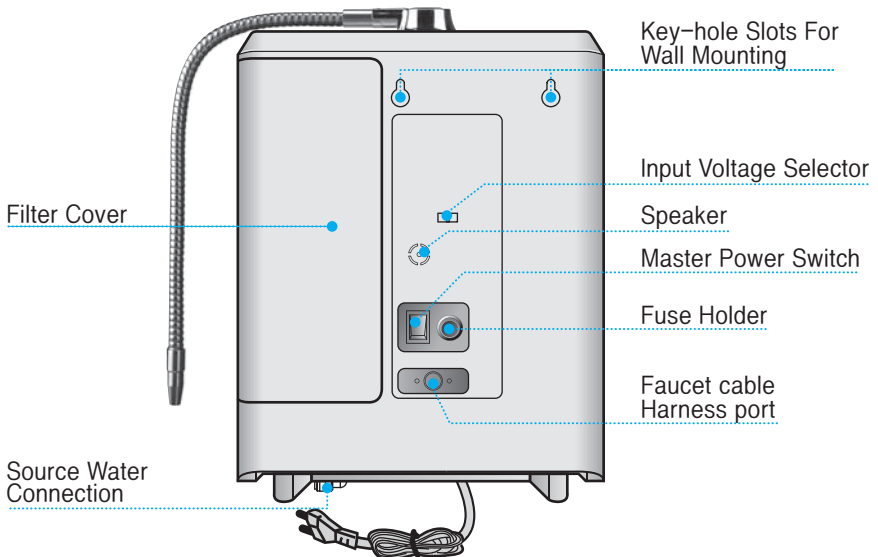
Before using the Echo[®]H₂ Machine that has been out of use for over 2weeks, let water flow for 2-3 minutes to ensure proper operation of the Echo[®]H₂ Machine.

Names And Functions

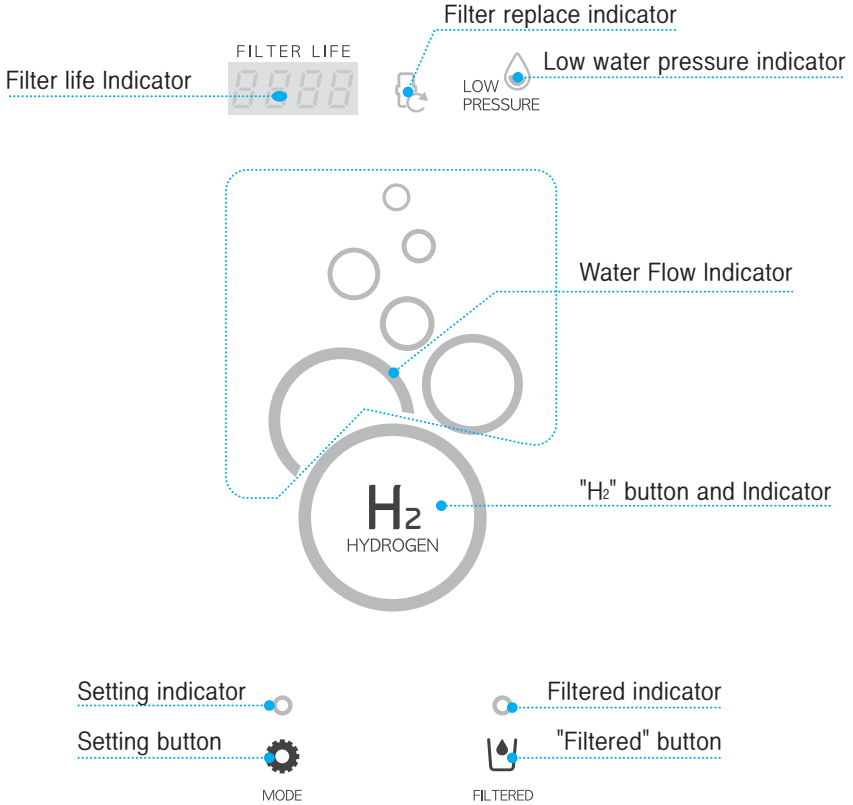
■ Front



■ Back



■ Indicators and controls



■ Accessories



Diverter Valve



Owner's Manual



Source Water Hose



Water Spout



Elbow



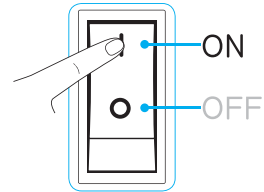
Teflon tape



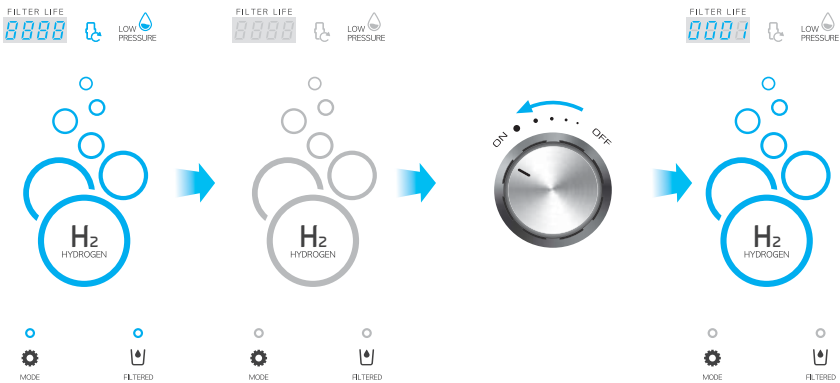
Quick Connect Removal Tool

○ Initial operation

1. Turn the master power switch on the back of the Echo® H₂ Machine to the ON position.



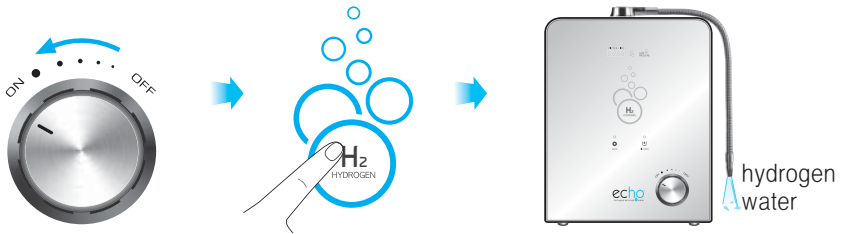
2. When the ON/OFF knob is turned ON, a voice announcement will be heard announcing the water type that is currently flowing, Filter life indicator will track the amount of water flowing and show the remaining filter life left.



○ How to Choose Hydrogen Water

Turn on the machine by rotating ON/OFF knob to ON position: the large round Hydrogen button should be illuminated. If not illuminated, press the Hydrogen button and this will initiate hydrogen water production
You will hear hydrogen water is dispensed with voice message.

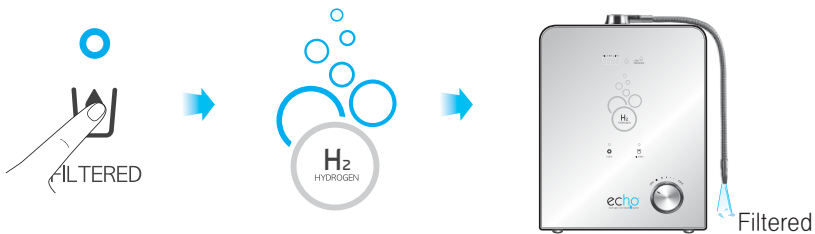
(You can use the hydrogen water by pressing the hydrogen water button(H₂))



○ How to Choose Filtered Water

Turn on the machine by rotating the ON/OFF knob to On position.
Press the filtered button. The H₂ Hydrogen button will no longer be illuminated.
Filtered water is dispensed with voice message "Filtered water".
In this mode, Hydrogen is not being produced.

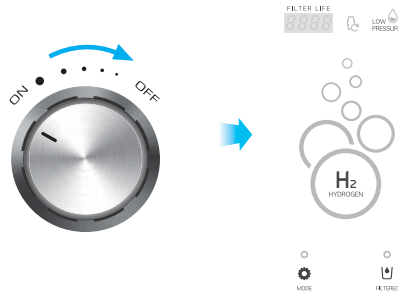
(You can use the filtered water by pressing the filtered water button even if the hydrogen water is being dispensed.)



How to use

○ How to turn off water flow

Rotate the ON/OFF knob to the OFF position. The LED Display will no longer be illuminated and the machine will go into standby mode.



○ Settings Button

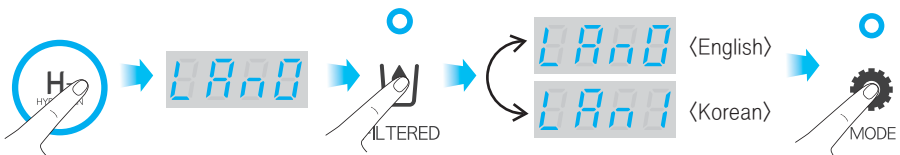
The 'Setting function' can be operated only when machine is powered on. It has language and volume settings.

1) How to set the language ※ The default setting is English.

- ① Touch and hold the Mode button for a few seconds until the ring sound is heard. The screen will appear as follows.



- ② Press the H₂ button to switch to the language setting (LAN0_ English) mode.
- ③ Press the Filtered button to change the setting value as follows.
(LAN0 → LAN1 → LAN0) LAN1 is set to Korean Language.
- ④ Press the Mode button to save the setting value.

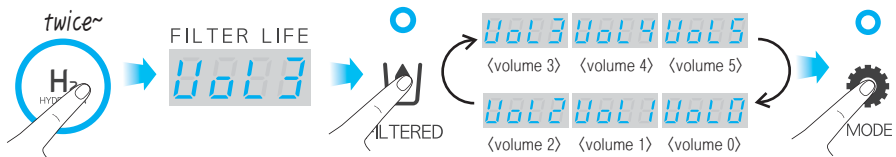


2) How to set the volume ※ The default setting is Vol3.

- ① Touch and hold the Mode button for a few seconds until the ring sound is heard. The screen will appear as follows.



- ② Press the H₂ button twice to switch to volume setting (Vol3) mode.
- ③ Press Filtered button to change the setting value as follows.
- ④ Press the Mode button to save the setting value.



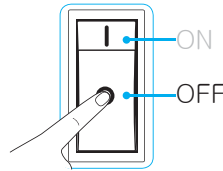
Change of genuine filter

How to replace the filter

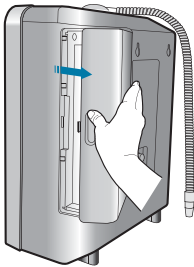
- 1 When the filter reaches the end of its life, the filter life indicator shows **0000**, the filter replace icon will then light up, and the voice message will say "Replace filter"



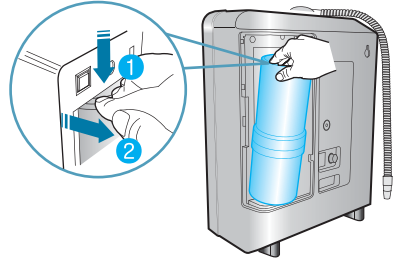
- 2 Turn off the power switch on the back of the machine and shut off the water.



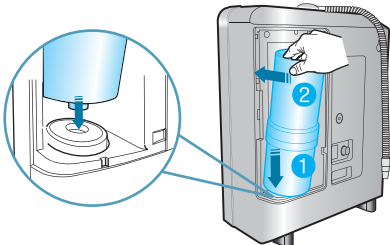
- 3 Pull the filter cover forward to remove it



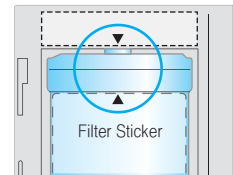
- 4 Push down on the top of the filter, then pull it out, to words you.




- 5 Place the genuine filter with the arrow pointing toward the front, fit it into the groove below, and push it in.



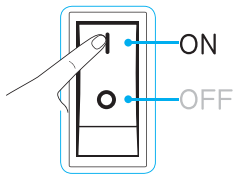
- 6 Match the direction of the arrow shown at the top of the filter to the direction of the arrow on the filter



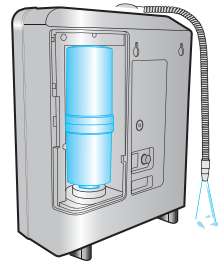
– Check for leaks after replacing the filter.
If there is a leak, check the "O" ring to verify it is not damaged, cracked, or needing to be lubricated.

 If the arrows are not lined up, the machine will not recognize the filter genuine.

- 7 Turn the master power switch to the ON position, Located on back of machine.



- 8 After pressing the filtered button in the standby mode, check for any leakage by flowing water for 2 ~ 3 minutes, if there are no leaks you can now close the filter cover.



⚠ Please replace filter when any one of the flowing occur:

- When the water no longer tastes clean and pure.
- Excessive odor in the water and/or severely decreased flow rate
- After prolonged period of inactivity more than 30 days.
(You can remove the filter and put in the refrigerator if going away from the machine)
- If the filter has been in use for over 1 year.

○ Genuine TAG filter

The genuine TAG filter has no reset function. When the filter replacement time comes, the filter number graphic shows 0000 and the filter change icon flashes.

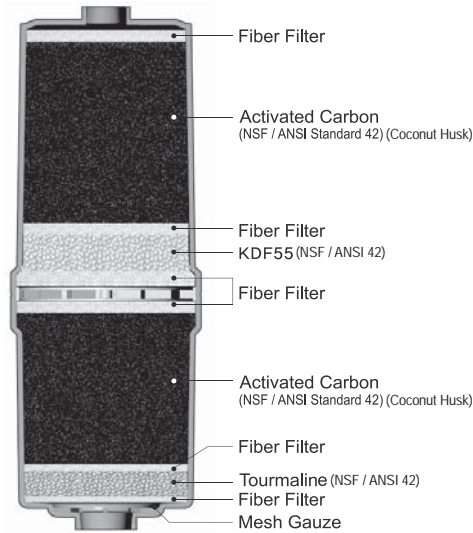
“Replace the filter” announces and enters to the filtered water mode.

The machine will not function until the filter has been replaced with a genuine filter.

Composition of Filter

○ Composition of the filter

〈High Performance Filter〉



Recommended period for changing filter

Effective period of filter use may differ greatly depending on season, usage, and environment. (I.E. water pressure, quality, and amount of contaminants.)

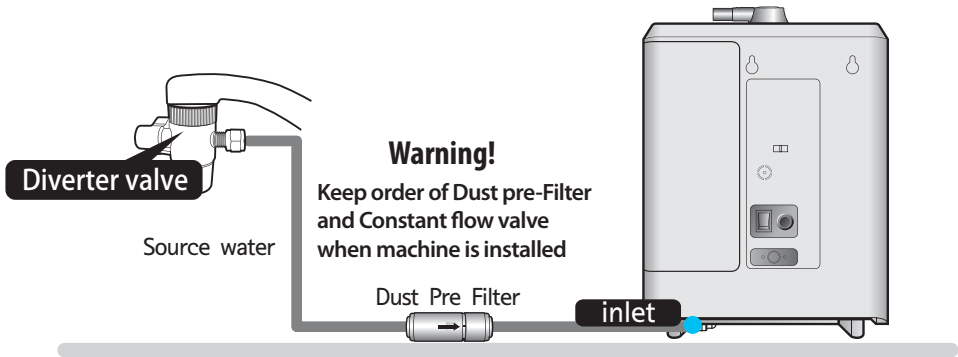
It is recommended to change your filter at least once a year even if you are not prompted or experiencing any issues.

⚠ Please replace filter when prompted by machine or if any one of the below occurs:

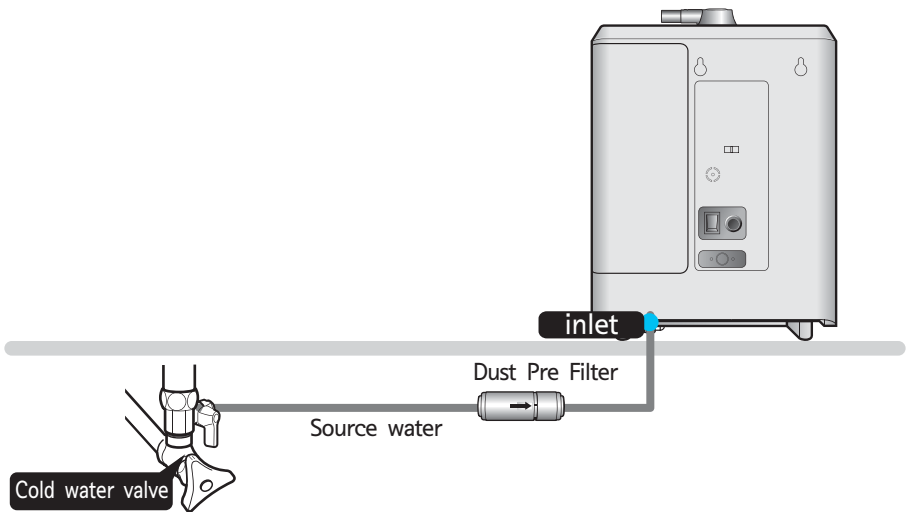
- Please replace filter when the water no longer tastes clean.
- Filter replacement may be needed , if you haven't used your machine in a long period of time.

How to Install

○ Above Counter Installation Procedure



○ Below Counter Installation Procedure

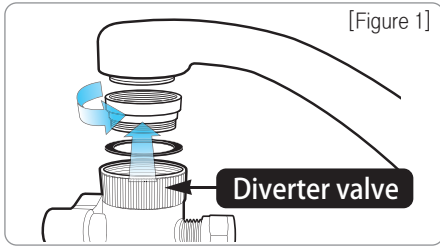


How to Install

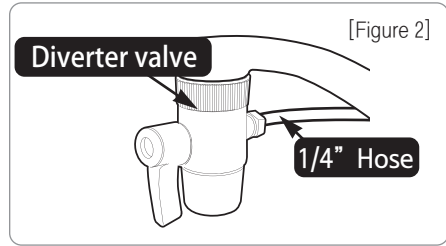
○ Above Counter Installation Procedure



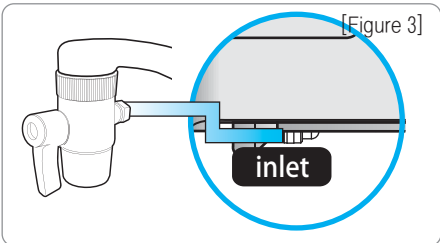
Install after stop water supply.



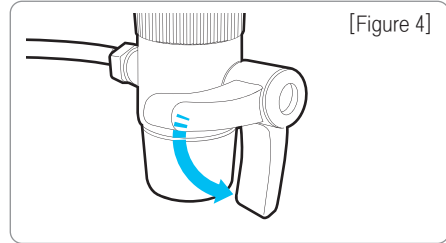
1 Please assemble the faucet top (water top) and the diverter valve as shown above.



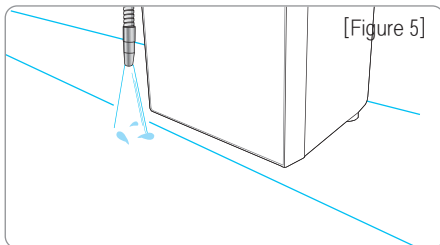
2 Connect 1/4" Hose hose to the adaptor in "Figure 2"



3 Push in and fasten the 1/4" Hose into the water inlet at the bottom of the machine.



4 After finishing the connection of "Figure 4" open the water supply valve and adjust the water pressure.



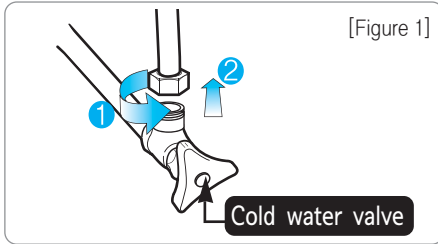
5 Check the leaks on all connections after installation is completed.

Below Counter Installation Procedure

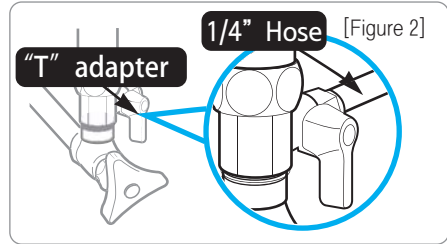


Caution

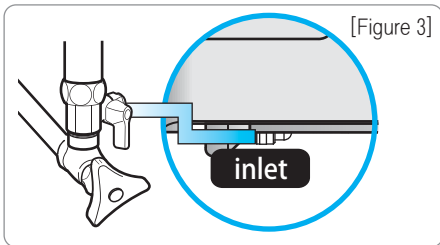
Install after stop water supply.



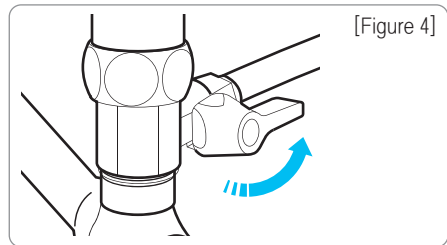
- 1** Loosen the nut of the cold water valve.



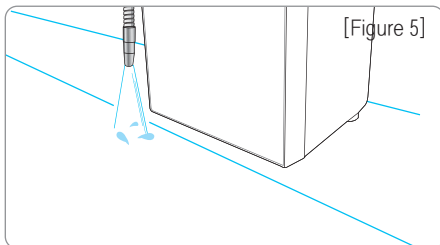
- 2** Connect 1/4" hose to the "T" adapter in "Figure 2"



- 3** Push in and fasten the 1/4" hose in "Figure 2" into the water inlet at the bottom of the machine.



- 4** After finishing the connection of "Figure 4" open the water supply valve and adjust the water pressure.



- 5** Check for leaks on the connections part after installation completed.

○ Installation Precautions

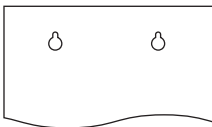


- Install water pump when the water pressure is low.
- When using the water with high hardness, you may want to
 - use a water softener.

○ Wall hanger installation



Install after closing water supply.



1. Soak the installation drawing with water and paste it in parallel with the wall.

2. Drive the nail in position.
(leave the nail head about 1cm).

3. Hang on the device body to the nail.

Trouble Shooting Guide

The Echo H2 Machine may not operate by improper use or trivial causes, rather than by break-down. Before contacting the Customer Support for repair, please refer to the following:

Symptom	Check point	Troubleshooting
There is no display in the stand-by mode.	<ol style="list-style-type: none"> 1. Is the power cord properly connected? 2. Is the power switch turned ON? 3. Is the fuse broken? 4. Is the fuse holder properly coupled? 	<ol style="list-style-type: none"> 1. Connect the power cord properly. 2. Turn on the power switch. 3. Replace the fuse. (250V/2A) 4. Couple the fuse holder properly.
Even with the supply of water, machine is not turning on.	<ol style="list-style-type: none"> 1. Did you replace the filter with an authentic filter? 2. Did you register an authentic filter? 3. Are you using a non-authentic filter? 	Replace with an authentic filter, and rotate it to make sure it is detected by machine.
Little or no water dispensed	<ol style="list-style-type: none"> 1. Is the water pressure sufficient? 2. Is the filter blocked? or full? 3. Is the Input Hose bent? 4. Is the flow control on the faucet diverter locked? 	<ol style="list-style-type: none"> 1. Check if there is water supply. Check if the water valve is open, or the hose is bent. 2. Replace the filter. 3. Straighten the bent hose. 4. Open the flow control device and adjust the flow rate.
Power suddenly turns OFF during operation	<ol style="list-style-type: none"> 1. Is the fuse broken? 2. Have you used the Echo H2 Machine for a long period of time at once? 	<ol style="list-style-type: none"> 1. Replace the fuse. (250V/2A) 2. The Echo® H2 Machine will stop to protect itself from over-current. Wait for 5 minutes to recommence.
The filter replacement lamp flickers.	Is the filter beyond the replacement cycle?	Replace the filter.
Water tastes bad.	<ol style="list-style-type: none"> 1. Is the filter beyond the replacement cycle? 2. Electrolyzed reduced water is highly active, although it is suitable as drinking water, a trace of Cl_2 may remain in the water leading to bad smell? 3. Over-electrolysis due to insufficient amount of input water may cause bad smell? 4. Is the hose for input water bent? 	<ol style="list-style-type: none"> 1. Replace the filter. 2. Adjust the pH level. If the problem persists, replace the filter. 3. Fit a booster pump to increase the amount of input water. 4. Unbend.
Water leaking around the filter or somewhere inside the Echo H2 Machine	<ol style="list-style-type: none"> 1. Is the filter properly fitted in? 2. Is the leakage from somewhere other than the filter? 	<ol style="list-style-type: none"> 1. Remove the filter, check the O-ring and put the filter back. 2. Stop immediately and contact the Customer Support.

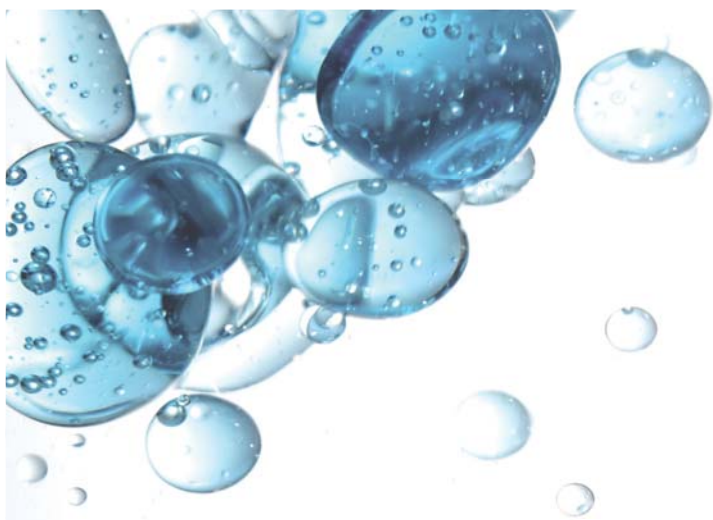
■ Echo H₂ Machine Specification

Device Type	Hydrogen water Generator
Model	Echo® H ₂ Machine
INPUT Voltage	AC 120V or 240V, 50Hz~60Hz
Power Supply	SMPS
Power Consumption	Max 250W
Overall Dimension	10.5 x 15 x 5.3in (270 x 383 x135 mm)(WxHxD)
Applicable Water Inflow Pressure	10~71psi (0.7~5kgf/cm ²)
Applicable Water Temperature	41°- 84°F (5~30°C)
Unit Operation Type	On / Off Knob
Electrolysis Method	Continuous Electrolysis
Filter Replacement	Easy Replaceable Cartridge
Filter Composition	Activated Carbon Filter(Cocunut Husk), KDF55, Tourmaline, .1 micron Filter
Filter Life	1000Gal/4000 Liters or 1 year
Filter Life Indicator	LED Module Indicator
ON/OFF Valve	Manual Valve

Protection type and class against electric shock : Class II device, Type B applied part

memo

A series of horizontal dashed lines for writing.



echo[®] machine

The Premier **H₂** Enriched Water Purification System

www.synergyscience.com

Toll Free 800-337-7017 Local +1-407-287-5392